

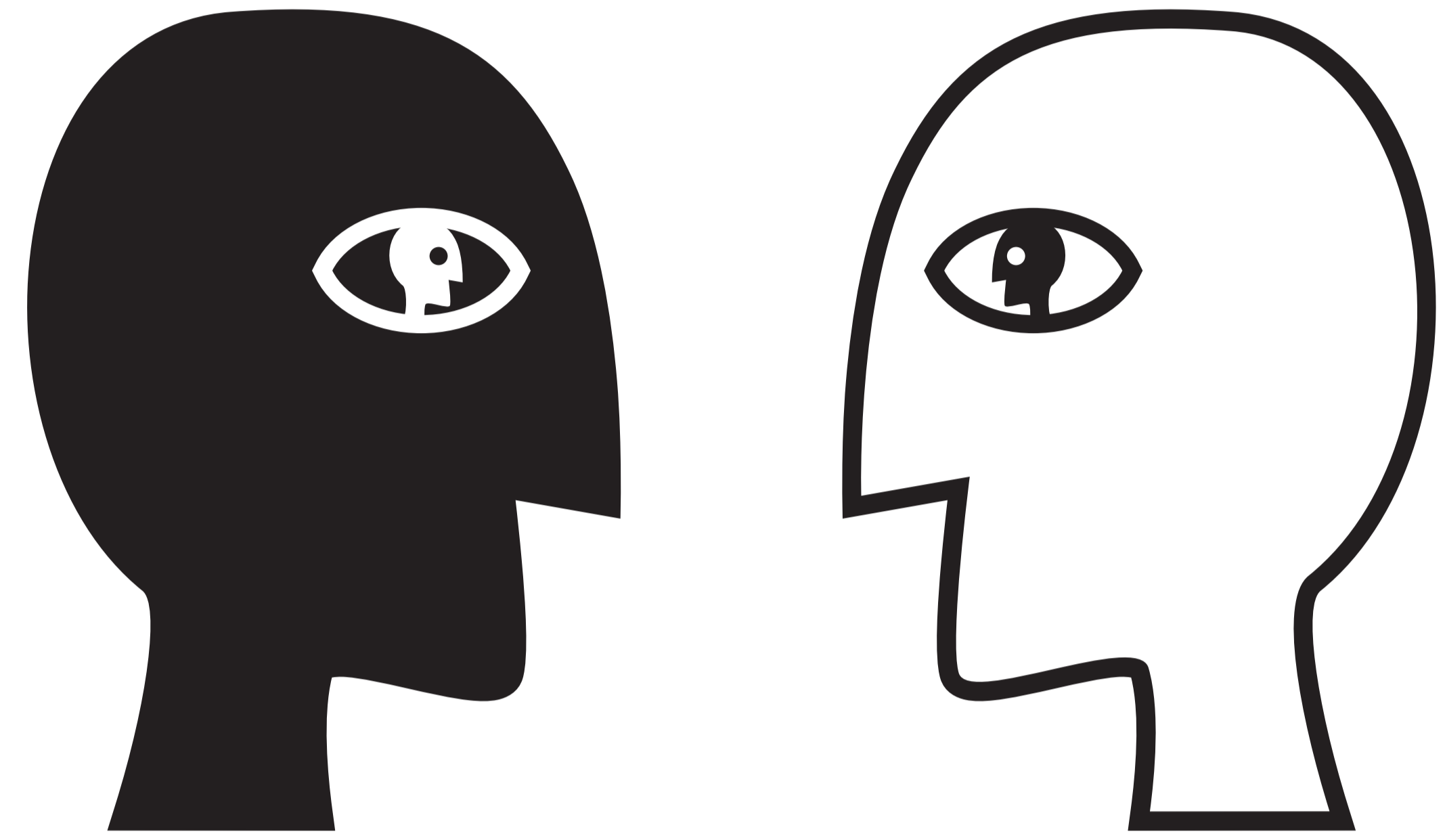
Museums as Portals to Compassionate Worldviews Through Empathy-Building

Elif M. Gokcigdem, Ph.D.
Historian of Islamic Art &
Author of *Fostering Empathy Through Museums*

Through a realization of our connectedness, we find meaning, hope, and purpose in life, and act with compassion and altruism towards the Whole --all of humanity and the planet.

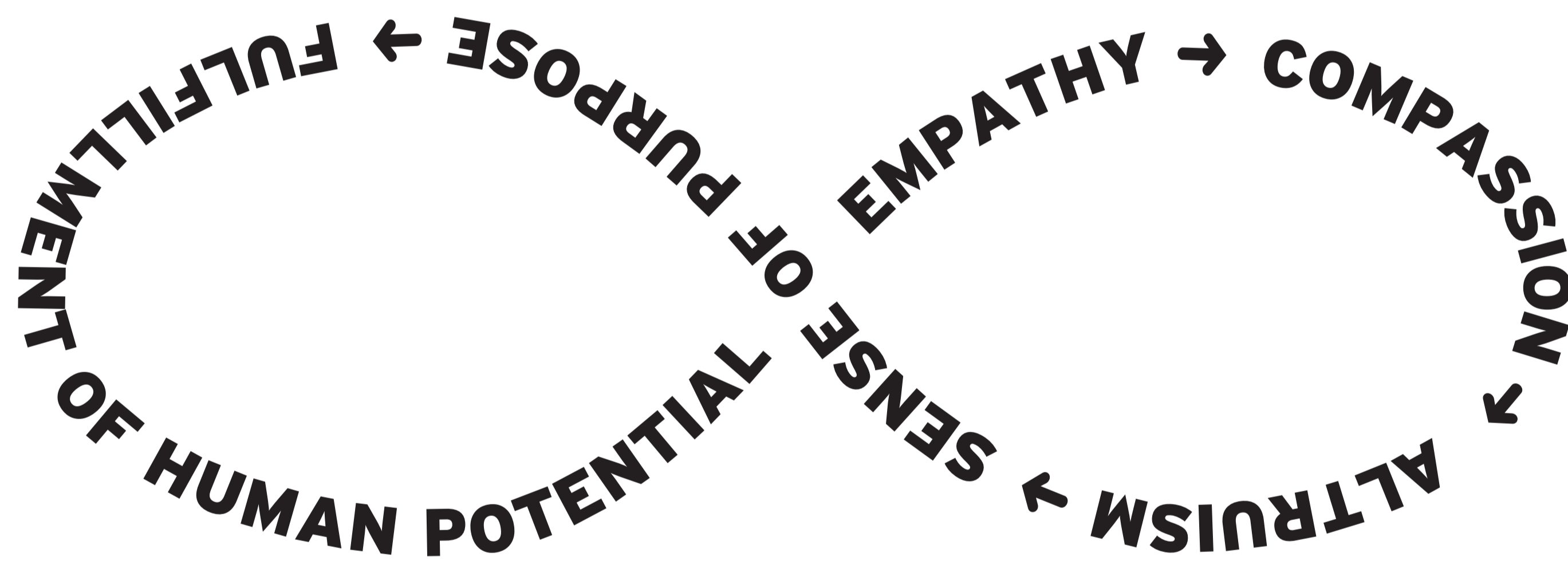
What?

- Complex Global & Environmental Problems
- Empathy is Essential to Any Solution, But is Declining
- We Must Deploy All of Our Resources to Innovate Our Way Through Our Empathy-Deficit Problem



“What is essential is invisible to the eye...”

The Little Prince, by Antoine de Saint-Exupéry



How?

Museums can be innovation incubators, where we can design for empathy & compassionate worldviews

- Readily Available Public Platforms
- Social & Educational Mission = Relevance & Sustainability
- Already Harbor Most Ingredients of Empathy-Building:
 - Safe Places to Encounter the “Other”
 - Storytelling & New Narratives
 - Proximity to Authentic Content
 - Dialogue
 - Informal Learning
 - Experiential Learning & Play
 - Awe & Wonder
 - Contemplation

Why?

- Information, Knowledge, and Technologies are Not Sufficient to Solve Our Increasingly Complex Global Problems
- A Pragmatic Perspective Shift & Positive Behavior Change is Required:

**I | Whole
Knowledge | Wisdom
Not Caring | Compassionate Actions**

- The Spark Needed to Ignite This Transformation is Empathy, Our Innate Ability to Feel Like Another

